

RESCUE CRADLE

Owner's Manual

REV 2

This manual is the property of Ocean Safety Limited and its associated or subsidiary companies.

It must not be copied without prior written permission from Ocean Safety Limited or its associated or subsidiary companies.

All rights reserved.

**YOUR SAFETY
OUR WORLD**



1.0	INTRODUCTION	P2
2.0	FITTING INSTRUCTION	P3
3.0	DEPLOYMENT	P4
4.0	RECOVERY	P5
5.0	CARE & MAINTENANCE	P6
6.0	SERVICE RECORD	P7

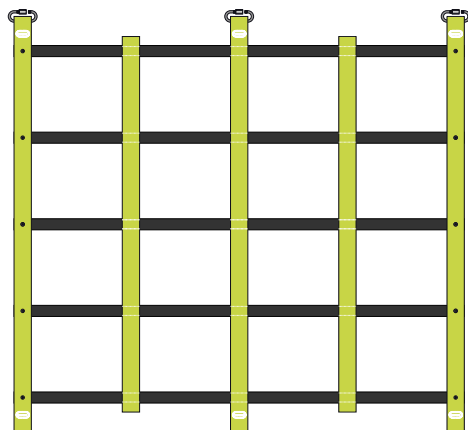
1.0 INTRODUCTION

1.1 The Ocean Safety Rescue Cradle is a reliable and easy-to-use recovery device designed to safely lift a person from the water onto a vessel, ensuring a smooth and controlled recovery.

1.2 Ideal for boats with high freeboard, the cradle makes it easier for crew members to bring someone on board when traditional rescue methods are challenging.

1.3 The recovery cradle rolls up into a compact and convenient bundle that can be securely strapped to the side of the vessel, ready for quick deployment in an emergency.

1.4 The product consists of a 2m long cradle and additional 1m extensions (as shown below) to increase length as required.



2.0 FITTING INSTRUCTIONS

2.1 The rescue cradle should be securely installed on the side of the vessel in a location that provides a safe and practical workspace for rescue personnel to perform recoveries effectively.



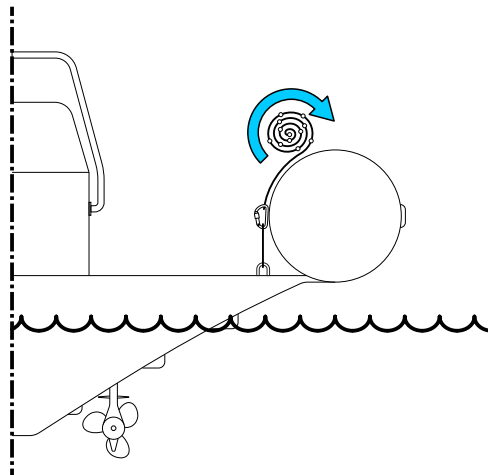
WARNING: ENSURE THE VESSEL HAS SUITABLE AND WELL PLACED ATTACHMENT POINTS TO SECURE THE CRADLE ALONG ITS FULL WIDTH.

2.2 Secure the recovery module to the attachment points using quick release fasteners such as carabiners or shackles. Attachment points can be a combination of the following:

- Lifting Points
- Cleats
- Handles
- Deck Eyes
- Stanchions
- Toe Rails

2.3 The rescue cradle should be mounted at the top of the railing or at deck level depending on the required recovery height and the design of the vessel.

2.4 The rescue cradle should be mounted to allow quick and unimpeded deployment when released.



3.0 DEPLOYMENT

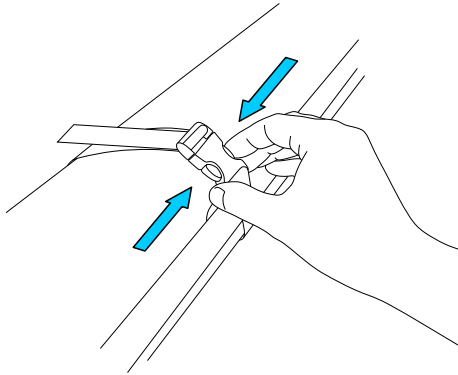


WARNING: ENSURE CRADLE IS SECURELY ATTACHED TO VESSEL BEFORE DEPLOYING.

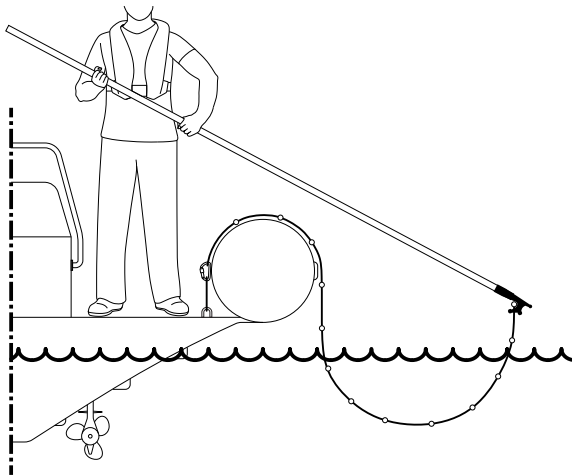


WARNING: CRADLE MUST NOT BE DEPLOYED UNTIL THE VESSEL HAS COME TO A COMPLETE STOP ALONGSIDE THE CASUALTY.

3.1 Release the two cradle retaining buckles and push the cradle outboard.



3.2 Using a boat hook or manoeuvring stick, open the cradle into the position shown below:



4.0 RECOVERY

4.1 Position the casualty into the cradle alongside the vessel.



WARNING: ENSURE THAT CASUALTY'S TORSO IS COMPLETELY SUPPORTED BY THE CRADLE BEFORE RECOVERING.

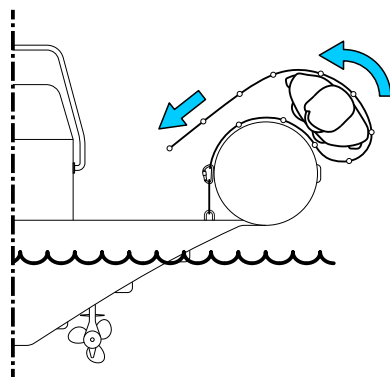
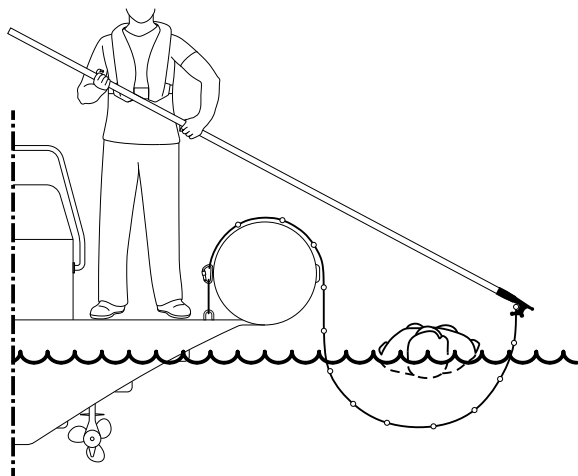
4.2 Retrieve the open end of the cradle and slowly begin pulling the ladder rungs, hand over hand, into the vessel. This action will draw the casualty out of the water.



WARNING: THE CASUALTY WILL ROLL WITHIN THE CRADLE DURING RECOVERY. TAKE CARE TO PULL THE LADDER RUNGS SLOWLY AND EVENLY TO MINIMISE FURTHER HARM TO THE CASUALTY.



WARNING: IF USING A CRANE TO RECOVER THE CASUALTY, ENSURE TO MAINTAIN A LOW SPEED TO MINIMISE FURTHER HARM



5.1 After use, the recovery cradle should be fully opened and hosed off with clean, fresh water.

5.2 The cradle should be allowed to drip dry before re-packing and re-use.



CAUTION: ENSURE THE CRADLE IS STORED OUT OF DIRECT SUNLIGHT WHILST DRYING.

5.3 The cradle is manufactured from high strength, durable materials, but should still be inspected regularly. Before and after each use, inspect the following:

1. Wear or damage to the attachment to the vessel.
2. Cuts or abrasions to the webbing.
3. Fractures or significant wear to the fibreglass rods or their protective sleeves.
4. Condition of all stainless steel connection elements.

5.4 All inspections should be logged.

5.5 Report any significant wear or damage immediately. Any repairs should be performed immediately.



NOTE: ONLY OCEAN SAFETY PARTS SHOULD BE USED FOR REPAIRS OF THE CRADLE. IF IN DOUBT, CONTACT OCEAN SAFETY.

6.0 SERVICE RECORD



SIGNATURE & STAMP	COMMENTS	REPAIRS AND/OR REPLACEMENTS	MODIFICATIONS	SERVICE STATION ADDRESS	DATE OF SERVICE

OCEAN SAFETY
Saxon Wharf
Lower York Street
Southampton
Hampshire
SO14 5QF

Tel: +44 (0)2380 720800
Email: info@oceansafety.com
Web: www.oceansafety.com