

JON BUOY[®]

SMART RELEASE Mk6

Owner's Manual

REV 01

This manual is the property of Ocean Safety Limited and its associated or subsidiary companies.

It must not be copied without prior written permission from Ocean Safety Limited or its associated or subsidiary companies.

All rights reserved.

**YOUR SAFETY
OUR WORLD**



1.0	INTRODUCTION	P3
	1.1 Features	P3
	1.2 Health and Safety	P3
	1.3 Fixing pack	P4
2.0	USING THE JON BUOY	P5
	2.1 Preparation for MOB Situation	P5
	2.2 Before leaving the shore or dock	P6
	2.3 Activating the Jon Buoy Smart Release	P7
3.0	INSTALLATION	P8
	3.1 Equipment required	P8
	3.2 Positioning	P8
	3.3 Plunger box installation	P9
	3.4 Planning	P10
	3.5 Junction Box-Control Panel and Bulkhead Installation	P10
	3.6 Junction Box installation	P14
	3.7 Junction Box rail mount installation	P16
4.0	CARE AND MAINTENANCE	P17
	4.1 After use	P17
	4.2 Storage and removal	P18
5.0	SERVICING	P19
	5.1 Warranty	P20
6.0	SERVICE RECORD	P21

Thank you for purchasing this Ocean Safety product. Please follow the assembly, mounting, usage, maintenance and servicing instructions to ensure the product is fitted safely and correctly.

1.1 FEATURES

1. Immediate remote release
2. 3 year service interval
3. ON/OFF arming switch
4. Protective push button cover
5. Versatile mounting locations & range adaptability
6. Mountable on rail or bulkhead for versatile installation
7. 10-meter cable included for extended reach

1.2 HEALTH AND SAFETY

1. **ALWAYS** take care when using power tools, particularly if there is any water in the working area.
2. **ALWAYS** wear eye protection.
3. **ALWAYS** check for pipes and cables before drilling.
4. **ALWAYS** use a drill that is suitable for the surface that is being drilled.
5. **DO NOT** use abrasive or chemical cleaners as these may damage the product.
6. **ALWAYS** switch off and unplug appliances before adjusting
7. **ALWAYS** use a residual current device (RCD) between the electrical supply and the equipment, especially when working outdoors, or within a wet or confined place
8. Ensure there are no trailing cables that can cause people to trip or fall



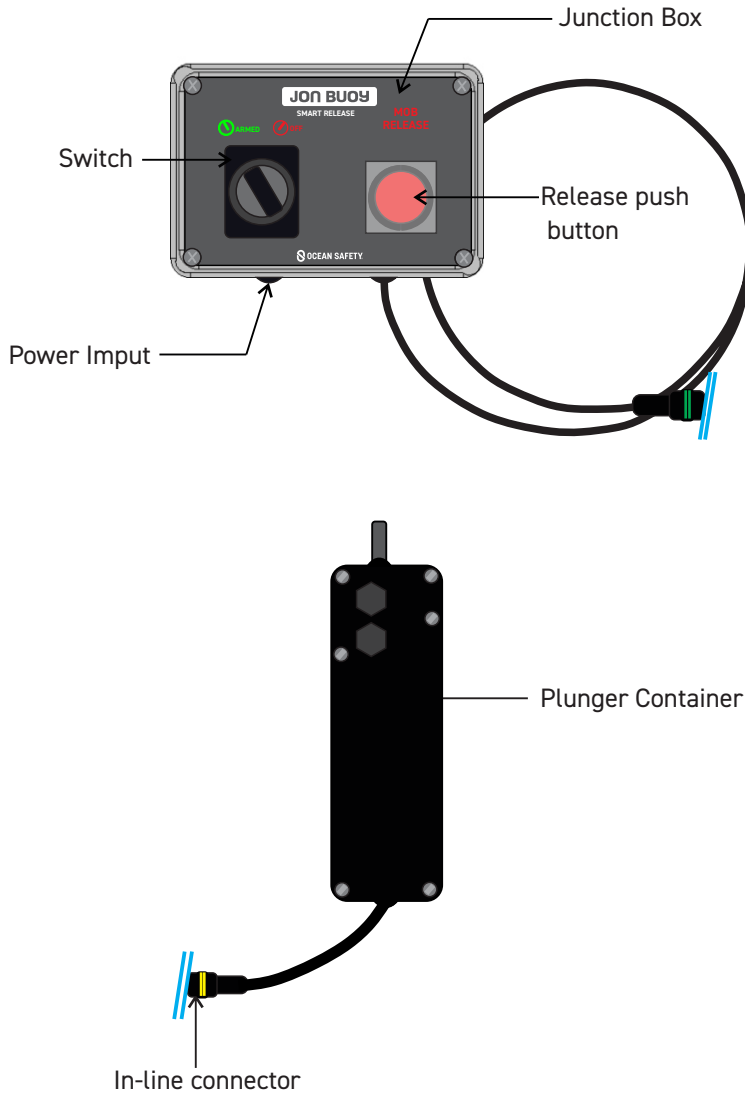
WARNING: PLEASE RETAIN THIS MANUAL FOR FUTURE REFERENCE



WARNING: IT IS ADVISED THAT A QUALIFIED ELECTRICIAN OR BOAT BUILDER FITS THIS PRODUCT AND WIRES UP TO THE POWER SUPPLY. OCEAN SAFETY WILL NOT TAKE RESPONSIBILITY FOR ANY INCORRECT FIXING.



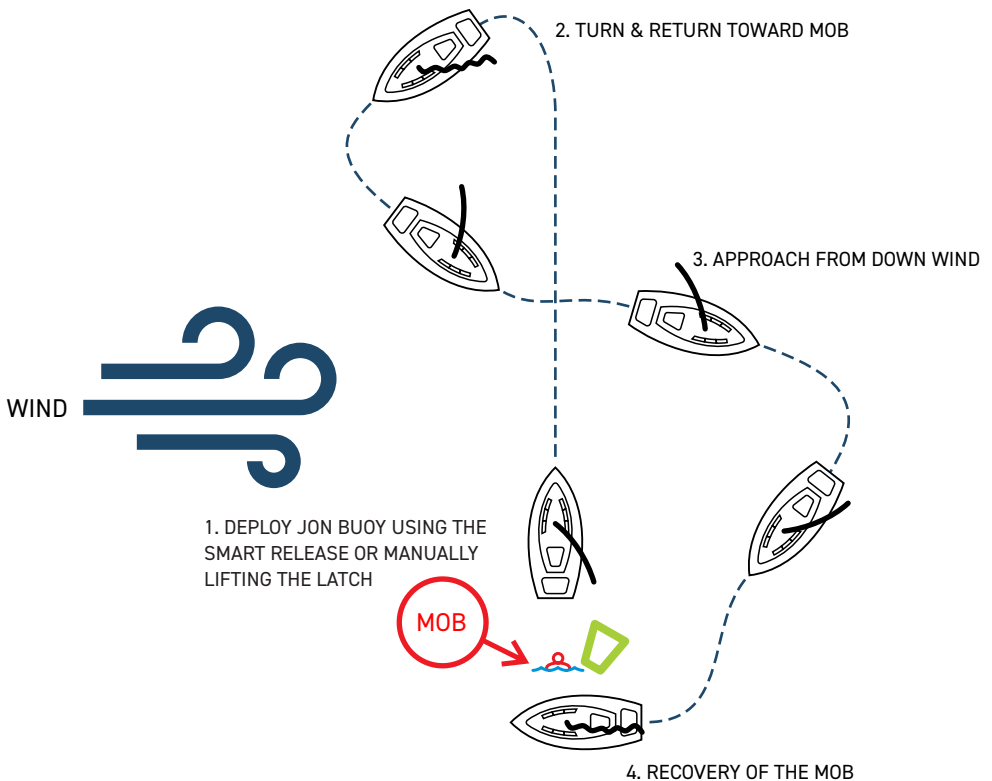
1.3 FIXING PACK



2.1 PREPARATION FOR A MOB SITUATION

2.1.1 In the event that the Jon Buoy is required, it is critical to understand how it works and to devise a plan for an emergency situation.

2.1.2 Below is a simple diagram of a MOB situation, from deployment to coming alongside the casualty;



WARNING: ENSURE ALL CREW MEMBERS ARE TRAINED IN THE USE OF THE JON BUOY, SMART RELEASE AND IN THE MOB PROCEDURE



2.2 BEFORE LEAVING THE SHORE OR DOCK

1. Arm the unit by turning the switch left on the junction box and ensure the switch indicator turns green.
2. Check the plunger container is firmly mounted to the Mk6 container.
3. Ensure the in-line connector is firmly screwed together and wired up.
4. If you have any concerns, contact your nearest Ocean Safety service station.
5. If any part of the product is damaged or faulty replace immediately.

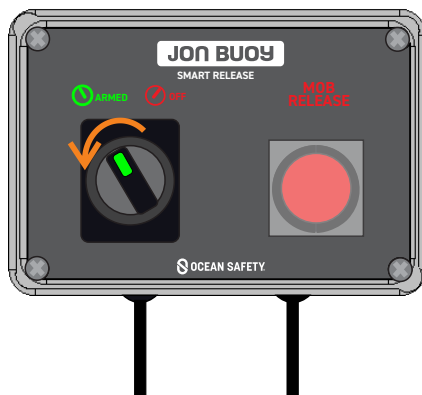


WARNING: IT IS ADVISED THIS PRODUCT IS NOT USED IN OVER 40 DEGREE TEMPERATURES



2.3 ACTIVATING THE JON BUOY SMART RELEASE

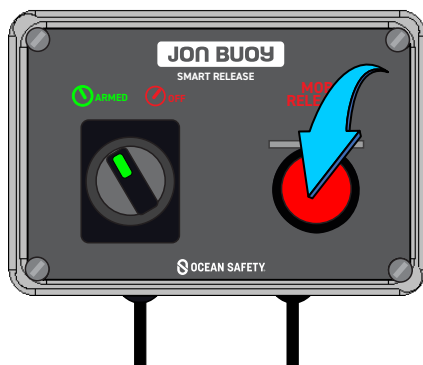
2.3.1 Arm the unit by turning the switch to the left and ensure there is a green light visible.



2.3.2 If the Jon Buoy needs to be activated lift the push button guard and press the red button.




NOTE: THIS IS A SINGLE USE DEVICE. ONLY ACTIVATE THE SMART RELEASE IN AN EMERGENCY SITUATION.




WARNING: ENSURE ALL CREW MEMBERS ARE TRAINED IN THE USE OF THE JON BUOY, SMART RELEASE AND IN THE MOB PROCEDURE



3.1 EQUIPMENT REQUIRED



NOTE: OCEAN SAFETY RECOMMENDS A QUALIFIED MARINE ELECTRICIAN FITS THE OCEAN SAFETY SMART RELEASE SYSTEM.





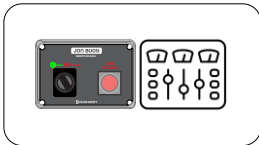
Small electrical
flathead screwdriver



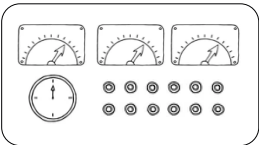
Standard crosshead
screwdriver

3.2 POSITIONING

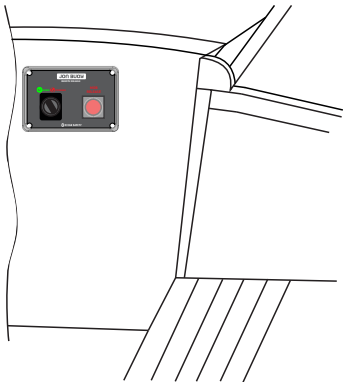
3.2.1 The Jon Buoy Smart Release junction box can be mounted on the control panel, bulkhead or rail. If mounted to a control panel or bulkhead the bottom of the junction box will need to be removed. The unit can be used with or without the bottom of the box screwed on.



Helm's Control Panel



Rail mounted



Bulkhead

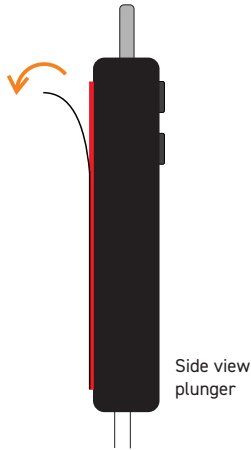
3.3 PLUNGER BOX INSTALLATION



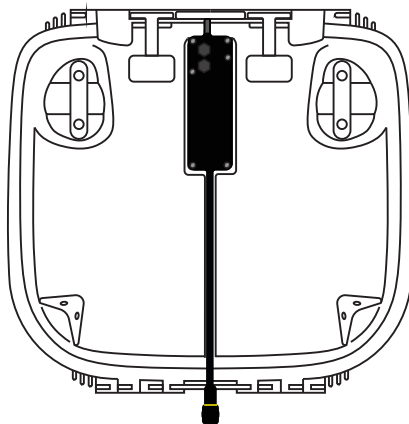
NOTE: IT IS RECOMMENDED THAT IF THE JON BUOY Mk 6 IS MOUNTED TO THE VESSEL RAIL IT IS REMOVED BEFORE INSTALLING THE PLUNGER BOX.



3.3.1 Peel off the protective cover on the VHB tape which is located on the back of the plunger box.



3.3.2 Insert the plunger box into the slot on the back of Jon Buoy container. Firmly push against the container to secure. Feed the cable down the slot in the Jon buoy.



3.4 PLANNING

3.4.1 Before installing your junction box ensure you have made measurements and checked the junction box will fit in the desired position. Once confirmed follow the installation section that relates to your unit.

3.5 JUNCTION BOX- BULDHEAD AND CONTROL PANEL INSTALLATION



NOTE: FIXINGS FOR CONTROL PANEL OR BULKHEAD MOUNTING ARE NOT SUPPLIED. THESE WILL VARY ON THE SURFACE THE MOUNTING PLATE IS FIXED TO. OCEAN SAFETY WILL NOT TAKE RESPONSIBILITY FOR ANY INCORRECT FIXING.



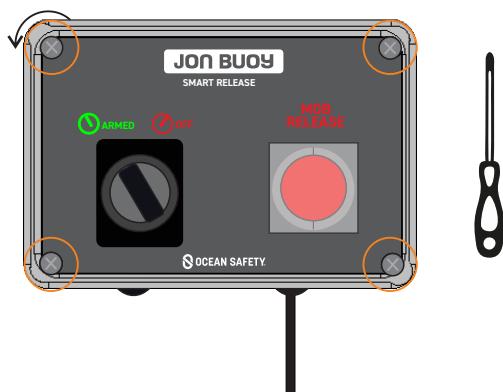
WARNING: IT IS ADVISED THAT A QUALIFIED ELECTRICIAN OR BOAT BUILDER FITS THIS UNIT AND WIRES UP TO THE POWER SUPPLY. OCEAN SAFETY WILL NOT TAKE RESPONSIBILITY FOR ANY INCORRECT FIXING.



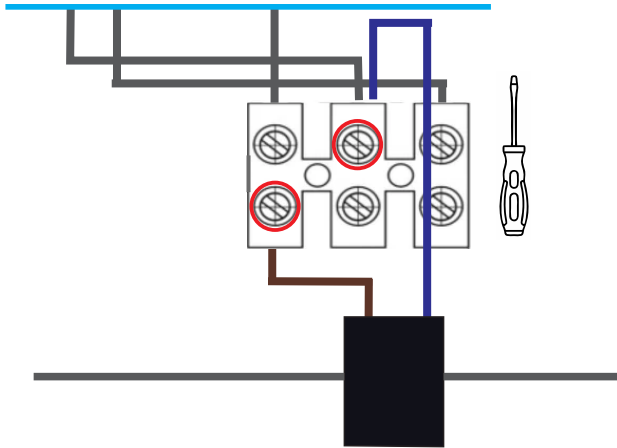
NOTE: IF YOU WISH TO INSTALL THE JUNCTION BOX WITHOUT REMOVING THE BOTTOM OF THE BOX PLEASE SKIP TO SECTION 3.6.1



3.5.1 Unscrew the four screws in the lid. Use a crosshead screwdriver. Be careful not to lose the O-rings on the screws.



3.5.2 Unscrew the live and neutral cable with a electrical flathead screwdriver and pull cable out the junction box.



3.5.3 Measure the length of cable needed. This will depend on where the junction box is mounted in relation to the Jon Buoy Mk 6. If the cable length provided is correct skip to step 3.6.4.

Decreasing cable:

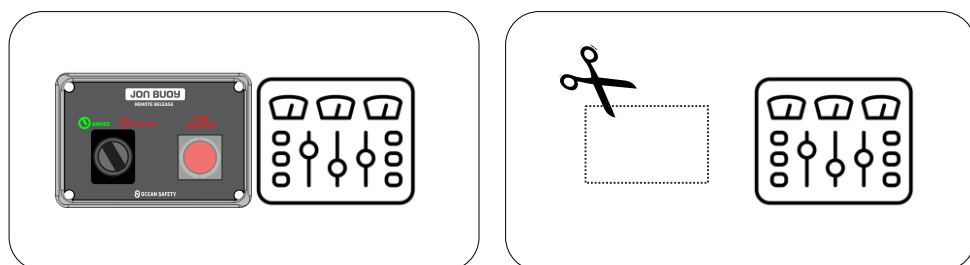
- Cut cable to desired length and strip ends

Increasing cable:

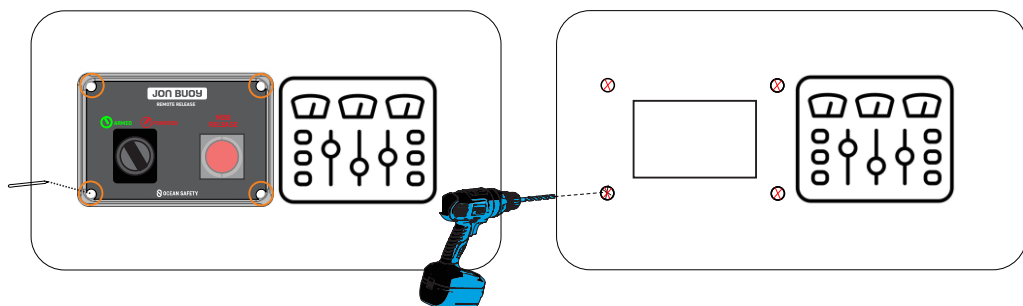
- Wire up an inline connector to the end of the cable. Wire additional cable into the connector.



3.5.4 Place lid over the control panel/desired location to confirm position. Remove control panel and cut out a rectangle 80x40mm. Place the lid over the cut out and ensure the it sits flush with the control panel.



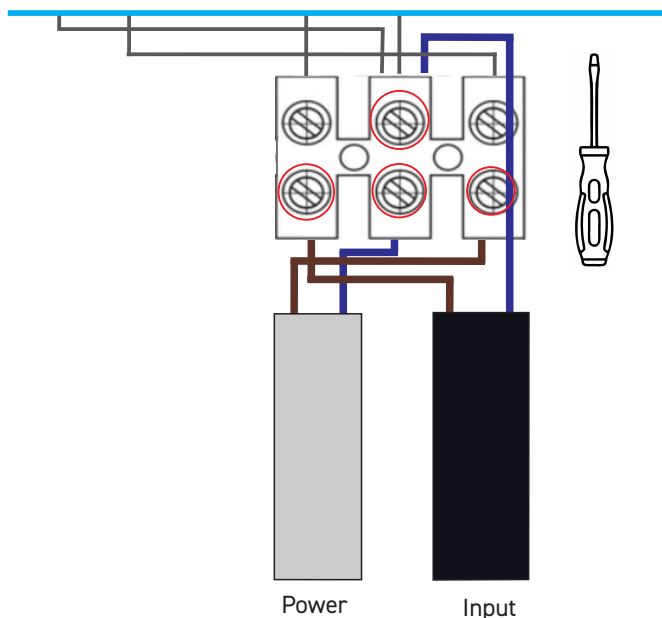
3.5.5 Mark the 4 x 5Ø holes around the lid.



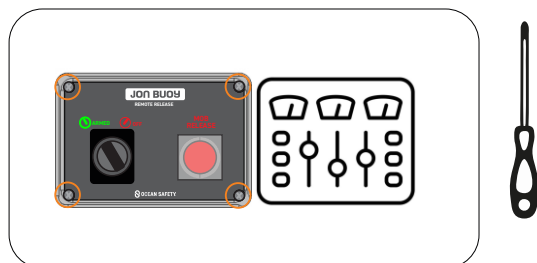
3.0 INSTALLTION

3.5.6 Screw the live and neutral, into the choc block. Secure with an electrical flathead screwdriver.

3.5.7 Then wire the power to the choc block using the diagram below.



3.5.8 Secure to the control panel using the four fixing positions. Ensure any fixings used have the rubber O-rings fitted.



3.6 JUNCTION BOX INSTALLATION

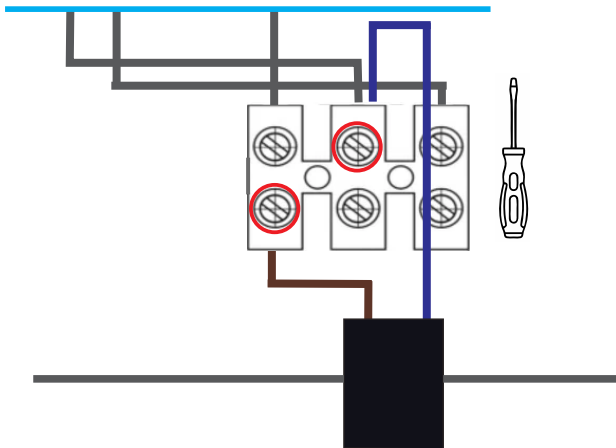


WARNING: IT IS ADVISED THAT A QUALIFIED ELECTRICIAN OR BOAT BUILDER FITS THIS UNIT AND WIRES UP TO THE POWER SUPPLY. OCEAN SAFETY WILL NOT TAKE RESPONSIBILITY FOR ANY INCORRECT FIXING.



3.6.1 Measure the length of cable needed. This will depend on where the junction box is mounted in relation to the Jon Buoy Mk 6. If the cable length is correct skip to step 3.7.2.

3.6.2 Unscrew the lid on the junction box. Use a cross-head screwdriver. Be careful not to loose the O-rings on the screws. Unscrew live and neutral cable with a electrical flathead screwdriver and pull cable out the junction box.



Decreasing cable:

- Cut cable to length and strip ends
- Re-wire using diagram above

Increasing cable:

- Secure an inline connector to the end of the cable. Wire additional cable into the connector. Wire back up to the chock block using the diagram above.

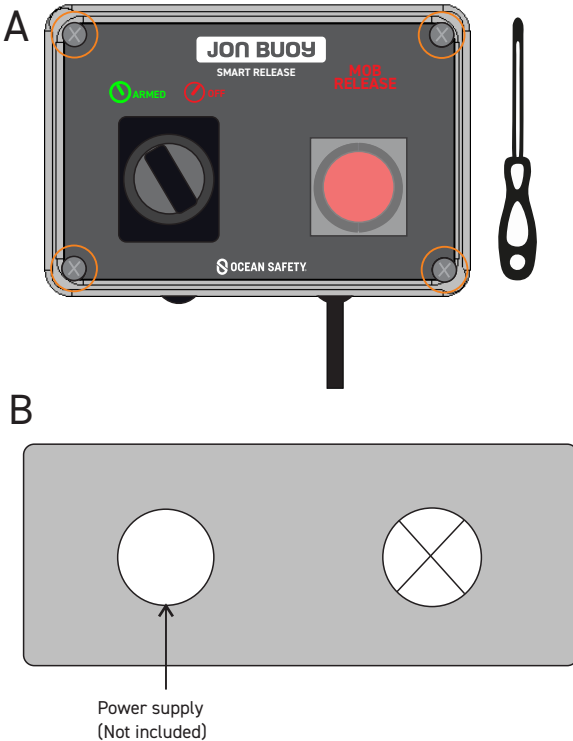
3.6.3 If the junction box is being installed with the bottom left on it must be secured to a flat surface. It is up to the owner to make sure this is firmly secure to the surface.



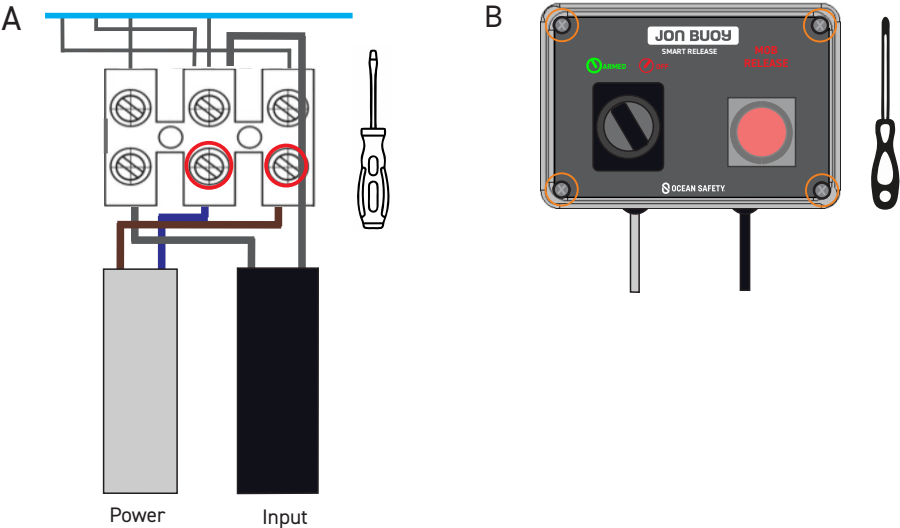
WARNING: OCEAN SAFETY WILL NOT TAKE RESPONSIBILITY FOR ANY UNSECURED FIXINGS.



3.6.4 The power will then need to be wired to the junction box. Unscrew the four screws in the lid if not yet done. Be careful not to loose the o-rings on the screws. Use a cross-head screwdriver. Feed the power cable into the empty hole in the side of the junction box.

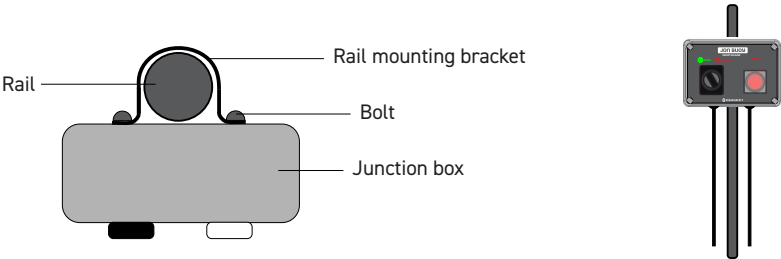


3.6.5 Wire up the power as shown below. Screw the lid back on to finish. Ensure the o-rings are still on the screws.



3.7 JUNCTION BOX RAIL MOUNT INSTALLATION

3.7.1 It is recommended to screw rail mount brackets into the back of the junction box and secure to the rail. These are not supplied and Ocean Safety will not take responsibility for any incorrect fixings.



4.1 AFTER USE



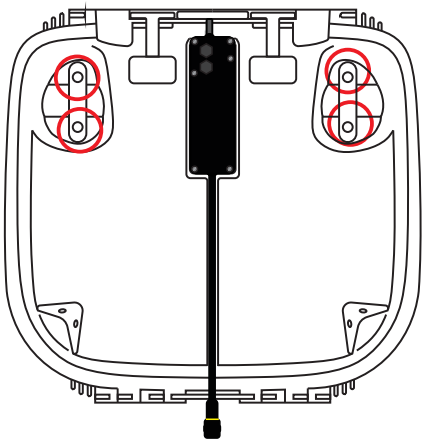
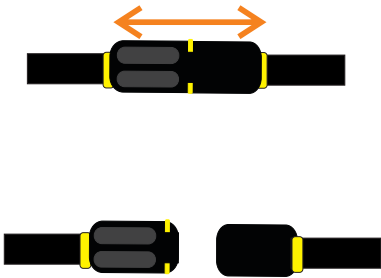
WARNING: ONCE ACTIVATED THE SMART RELEASE HAS TO BE SERVICED.
THIS IS A ONCE ONLY PRODUCT AND CANNOT BE TESTED.



Once fired the unit and Jon Buoy Mk 6 must be taken to a service station.

- Lift the notch up on the in line connector and pull the female and male housing apart leaving the male housing and wire on the vessel
- Unscrew the fixing mounts on the MK6 container.

The container and smart release can then be taken to your nearest service station.



Container and smart release taken to service station together.



WARNING: ENSURE THE MALE HOUSING LEFT ON THE VESSEL IS COVERED
FROM ANY WATER INGRESS WHILE THE UNIT IS BEING SERVICED



4.2 STORAGE AND REMOVAL



WARNING: NEVER ATTEMPT TO RE-PACK THE JON BUOY OR SMART RELEASE FOR RE-USE. ONLY TRAINED PERSONNEL AT AN OCEAN SAFETY APPROVED SERVICE STATION CAN RE-PACK AND RE-ARM A JON BUOY AND SMART RELEASE TO THE NECESSARY STANDARD REQUIRED.



4.2.1 Ocean Safety recommend that if the vessel is not in use, the Jon Buoy and Smart Remote is removed and kept in a dry storage facility. This will prolong the life of the Jon Buoy. Ensure the male and female inline connector is disconnected.

4.2.2 Alternatively, cover the Jon Buoy and Smart Release with a waterproof cover.

4.2.3 It is the owners responsibility to remove any protective cover or reconnect the inline connector should the vessel be in use. Failure to do so may result in the failure of the product to deploy properly.



NOTE: IF CONTAINER AND SMART RELEASE HAVE BEEN REMOVED FROM ITS MOUNTING ENSURE THE IN-LINE CONNECTOR IS RE-JOINED



5.0.1 The Jon Buoy Smart Release must be serviced at an Ocean Safety Approved Service Station.

5.0.2 If the Jon Buoy Recovery Module is manually activated by opening the latch the Smart Release will still need to be serviced.

5.0.3 Follow section 4.1 for removing your Jon Buoy Recovery Module and smart release for servicing.

5.0.4 To find the nearest Ocean Safety Approved Service Station, visit the website or contact Ocean Safety:



Tel: +44 (0) 2380 720800

Email: info@oceansafety.com

Web: www.oceansafety.com

5.1 WARRANTY

5.1.1 Ocean Safety extended warranty is only valid if the product has been registered by the owner. If the owner has not registered the product with Ocean Safety, the warranty is only valid for 1 year from date of purchase.

5.1.2 Ocean Safety warranty does not cover damage resulting from accidents, neglect or normal wear and tear and is only valid if a full service history, carried out by an approved Ocean Safety service centre, is available.

5.1.3 Visit the Ocean Safety website for full warranty details and for extended warranty durations.

6.0 SERVICE RECORD



Signature & Stamp	Comments	Repairs and/or Replacements	Modifications	Service Station Address	Date of Service

JON BUOY®

OCEAN SAFETY
Saxon Wharf
Lower York Street
Southampton
Hampshire
SO14 5QF

Tel: +44 (0)2380 720800
Email: info@oceansafety.com
Web: www.oceansafety.com