

# LIFERAFT DECK LASHING STRAP

Owner's Manual

REV 01

This manual is the property of Ocean Safety Limited and its associated or subsidiary companies.

It must not be copied without prior written permission from Ocean Safety Limited or its associated or subsidiary companies.

All rights reserved.

**YOUR SAFETY  
OUR WORLD**



<b>1.0</b>	<b>INTRODUCTION</b>	<b>P3</b>
1.1	Stowage Guidelines	P3
<b>2.0</b>	<b>PREPARATION</b>	<b>P4</b>
2.1	Safety	P4
2.2	Fixing Pack	P4
<b>3.0</b>	<b>CONSTRUCTION</b>	<b>P5</b>

## 1.1 Stowage Guidelines



**WARNING:** There are two bands positioned transversely towards each end of the container and a wide rubber seal around its periphery. These are an integral part of the container and must not be removed.



When selecting the position of the liferaft onboard a vessel, there are a number of points that require consideration.

1. Firstly the liferaft must be positioned so it can be easily accessed and deployed in an emergency situation. Nothing must be stored on top of the liferaft.
2. Any strapping down of the liferaft to the desired location must be easy to remove with no locking system. Where possible any securing arrangement should incorporate a hydrostatic release unit (HRU). The liferaft should be positioned clear of any overhangs, rigging or any other object that may hinder deployment. (Especially if the liferaft is fitted with a HRU).
3. The liferaft must not be positioned where it or its painter line are likely to become a trip hazard.
4. Liferafts are satisfactory drop tested to a height specified on the container. The stowage point must not be above this height from the waterline.
5. On smaller vessels, the liferaft should be viewed as a fixed magnetic material and therefore should be positioned away from the ship's compass and other equipment which might be affected.
6. At no time should the liferaft be used as a seat or be stood on.
7. The liferaft must not be stowed in close proximity to any form of heat source.
8. The container may be mounted flat on the deck. Care must be taken not to block the drain holes in the bottom, side or end.
9. If connected to a HRU, only withdraw sufficient painter line to reach and tie off to the link on the HRU.

## 2.1 Safety

The following instructions have been written specifically for the Ocean ISO liferaft range. Although all liferafts function in a similar way, there may be some minor adjustments required to suit specific models of liferaft. If in doubt, contact your liferaft supplier for guidance.

Locate the liferaft in the desired position on deck. Note that the lashing strap is suitable for both transverse and longitudinal (as depicted in pictures below) installation.

The securing eyelet is to be positioned at one end of the container, the retaining clamps at the opposite end of the container.

Use fasteners suitable for your application (not supplied). Do not use non-ferrous fasteners or aluminium fasteners for this application. A4 (316L) stainless steel fasteners will provide suitable corrosion resistance.

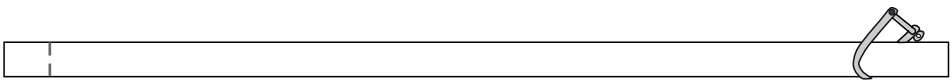
Position the securing eyelet and retaining clamps in position. Ensure that the position of the eyelets is tight to the edge of the sealing strip.

Mark out the positions for the fasteners through the holes in the plates. Pilot drill the holes if required.

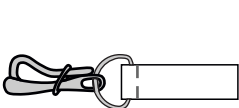
## 2.2 Fixing Pack



A. Long strap with two bar buckle x1



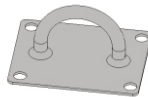
B. Long strap x1



C. Short strap x1



C. Clip holds

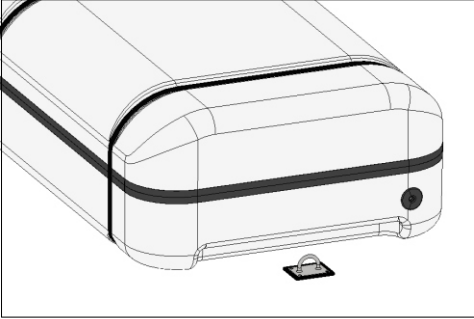


C. Plate steel deck fitting

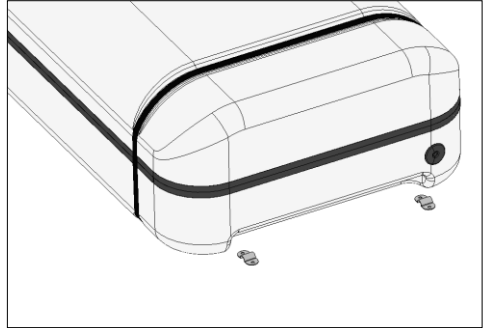


C. Rubber deck fitting

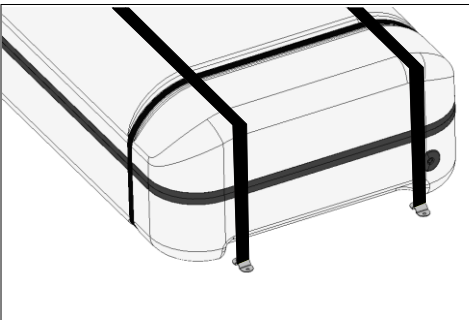
3.1 Position the securing eyelet and backing plate tight to the edge of the sealing strip. Position the eyelet so that the eye of the eyelet is facing the container.



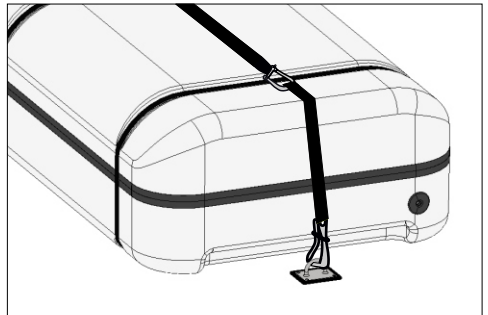
3.2 Position the retaining clamps on the opposite side. Make sure they are tight to the edge of the sealing strip and so that the eye of the clamp is facing across the width of the container.



3.3 Clamp the two ends of the strap with the loops to the deck using the retaining clamps. Secure the retaining clamps to the deck using suitable fasteners. Pilot drill the holes for the securing eyelet if required. Position the eyelet backing plate underneath the securing eyelet and fasten to the deck.



3.4 Take the end of the harness fitted with the senhouse slip. Locate the senhouse slip around the eyelet and lock closed. Attach the shackle to the loop and adjust the length of the strap by tightening the buckle until the webbing is tight. If necessary repeat this operation until it is considered that the straps are tight. When the straps are considered to be tight around the container attach the free end of the painter line to a strong point or to the weak link on the HRU if fitted (refer to the HRU fitting instructions).



OCEAN SAFETY  
Saxon Wharf  
Lower York Street  
Southampton  
Hampshire  
SO14 5QF

Tel: +44 (0)2380 720800  
Email: [info@oceansafety.com](mailto:info@oceansafety.com)  
Web: [www.oceansafety.com](http://www.oceansafety.com)

